



2 Green Farm Close, Green Street Green, Kent, BR6 6DJ

*****GUIDE PRICE £700,000-£725,000*****

Nestled in the charming neighbourhood of Green Farm Close, Green Street Green, this delightful house offers a perfect blend of comfort and convenience. The property is situated in a peaceful cul-de-sac, making it an ideal retreat for families and professionals alike.

As you approach the house, you will be greeted by a well-maintained exterior that reflects the care and attention given to this home. Inside, the spacious layout provides ample room for relaxation and entertaining. The living areas are bright and airy, filled with natural light that creates a warm and inviting atmosphere.

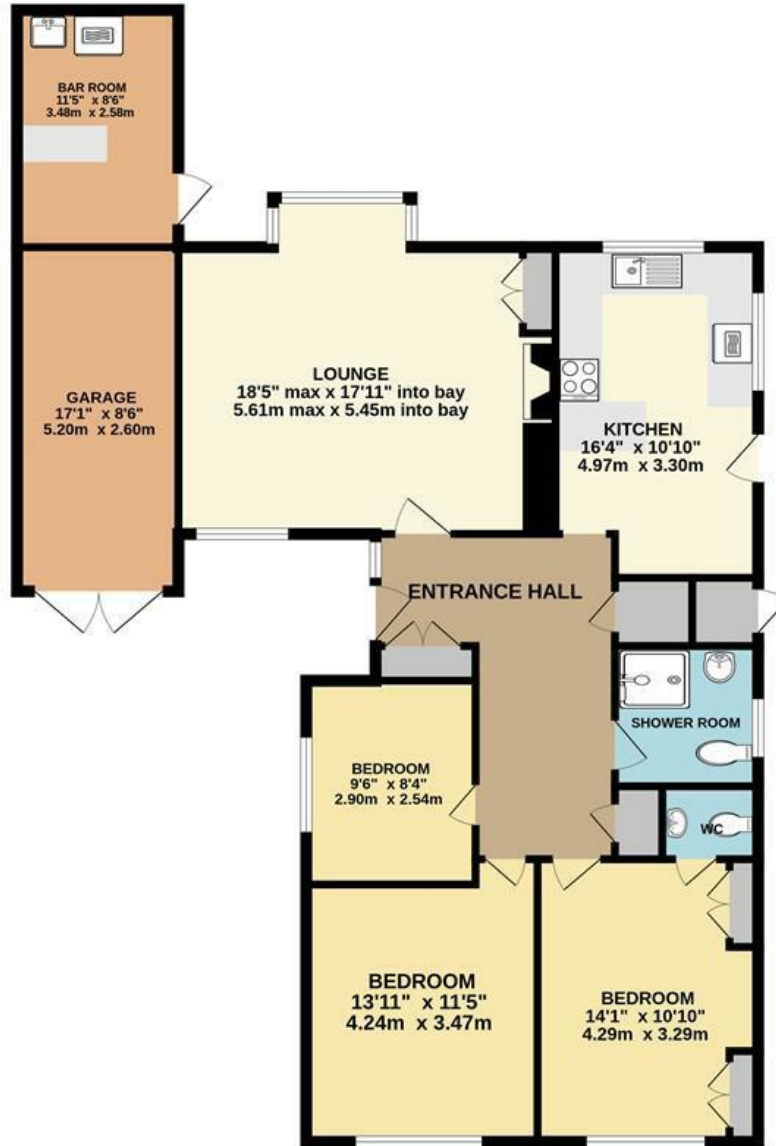
The kitchen is well-equipped, offering both functionality and style, making it a wonderful space for culinary enthusiasts. The bedrooms are generously sized, providing a tranquil haven for rest and rejuvenation.

The outdoor space is equally impressive, featuring a lovely garden that is perfect for enjoying sunny days or hosting gatherings with friends and family.

- Bungalow
- Open fire place
- Outdoor bar/office space
- WC to master
- Walking distance to local shops
- Walking distance to High Elms Country Park
- Close to outstanding schools
- Under 1 mile to Chelsfield Station
- Council Tax F
- EPC D

£700,000

GROUND FLOOR



Whilst every attempt has been made to ensure the accuracy of the floorplan contained here, measurements of doors, windows, rooms and any other items are approximate and no responsibility is taken for any error, omission or mis-statement. This plan is for illustrative purposes only and should be used as such by any prospective purchaser. The services, systems and appliances shown have not been tested and no guarantee as to their operability or efficiency can be given.
Made with Metropix ©2026

Energy Efficiency Rating		
	Current	Potential
Very energy efficient - lower running costs		
(92 plus) A		
(81-91) B		
(69-80) C		
(55-68) D	61	70
(39-54) E		
(21-38) F		
(1-20) G		
Not energy efficient - higher running costs		
England & Wales	EU Directive 2002/91/EC	